

# Laser and Rotary Engraving Materials

## Laser MAX

LM92-602 Crimson/ White	LM92-607 Crimson/ Yellow	LM92-622 Claret/ White	LM92-612 Tangerine/ White	LM92-704 Canary/ Black	LM92-932 Kelly Green/ White	LM92-972 Celadon Green/ White	LM92-912 Emerald/ White	LM92-512 Sky Blue/ White	LM92-517 Patriot Blue/ White	LM92-552 Patriot Blue/ White	LM92-382 China Blue/ White
LM92-552 Purple/ White	LM92-206 White/ Crimson	LM92-205 White/ Blue	LM92-204 White/ White	LM92-854 Almond/ Black	LM92-312 Smoke Grey/ White	LM92-402 Black/ White	LM92-422 Gloss Black/ White	LM92-407 Black/ Yellow	LM92-417 Black/ Gold	LM92-427 Gloss Black/ Gold	LM92-413 Black/ Silver
LM92-577 Celestial Blue/ Gold	LM92-677 Port Wine/ Gold	LM92-937 Verde/ Gold	LM92-894 Br. Copper/ Black	LM92-884 Deep Bronze/ Black	LM92-734 Rise Gold/ Black	LM92-754 European Gold/ Black	LM92-714 Smooth Gold/ Black	LM92-334 Br. Silver/ Black	LM92-344 Br. Silver/ Black	LM92-344 Smooth Silver/ Black	

\* Some LaserMax™ foils are not recommended for applications in which UV stability is a requirement.  
 \* LaserMax™ metals, Verde/Gold and Port Wine/Gold are not UV stable.  
 LaserMax™ metals are available with NoMark Plus finish by adding "0+" to the end of the item code.

## Laser MARK

922-602 Red/ White	922-607 Red/ Yellow	922-704 Yellow/ Black	922-852 Bright Green/ White	922-912 Sapphire/ White	922-502 Sapphire/ White	922-512 Blue/ White	922-517 Navy/ White	922-552 Navy/ White	922-822 Mod. Brown/ White	922-842 Dark Brown/ White	922-228 Dark Brown/ Intr. Brown
922-206 White/ Red	922-205 White/ Blue	922-204 White/ Black	222-322 Light Grey/ White	922-312 Grey/ White	922-407 Black/ Yellow	922-402 Black/ White	922-422 Gloss Black/ White	922-417 Gloss Black/ Gold	922-427 Gloss Black/ Gold	922-477 Port Wine/ Gold	922-937 Verde/ Gold
922-517 Celestial Blue/ Gold	922-153 Cherry/ White	922-602 Black Walnut/ White	922-172 Walnut/ White	922-192 English Walnut/ White	922-714 Smooth Gold/ Black	922-734 Br. Gold/ Black	922-754 European Gold/ Black	922-354 Br. Aluminum/ Black	922-334 Br. Silver/ Black	922-344 Smooth Silver/ Black	

\* Not recommended for harsh or high humidity indoor or outdoor applications.  
 \* NoMark™ Plus finish is available on all LaserMark™ metals by adding "0+" to the end of the item code.

## FlexiBrass & FlexiColor

602-677 Port Wine/ Brass	602-677 Port Wine/ White	602-937 Verde/ Brass	602-937 Celestial Blue/ Brass	602-572 Celestial Blue/ White	602-735 Brushed Gold/ Blue	602-894 Brushed Copper/Black	602-874 Brushed Bronze/Black	602-884 Deep Bronze/ Black	602-417 Matte Black/ Brass	602-427 Gloss Black/ Brass	602-602 Red/ White
602-744 Yellow/ Black	602-512 Blue/ White	602-204 White/ Black	602-402 Black/ White	602-734 Brushed Gold/ Black	602-754 European Gold/ Black	602-354 Brushed Alum./ Black	602-334 Br. Silver/ Black	602-413 Matte Black/ Silver	602-423 Gloss Black/ Silver		
MP92-314 Brushed Stainless Steel/ Black	MP92-364 Brushed Copper Penny/ Black	MP92-764 Brushed Antique Gold/ Black	MP92-364 Brushed Bright Nickel/ Black	MP92-316 Brushed Stainless Steel/ Red	MP92-316 Brushed Stainless Steel/ Blue	MP92-766 Brushed Antique Gold/ Red	MP92-765 Brushed Antique Gold/ Blue				

## metalgraph plus

It's not metal. It's better.

MP92-314 Brushed Stainless Steel/ Black	MP92-364 Brushed Copper Penny/ Black	MP92-764 Brushed Antique Gold/ Black	MP92-364 Brushed Bright Nickel/ Black	MP92-316 Brushed Stainless Steel/ Red	MP92-316 Brushed Stainless Steel/ Blue	MP92-766 Brushed Antique Gold/ Red	MP92-765 Brushed Antique Gold/ Blue
--	---	---	--	--	---	---	--

## multigraph

one material. all applications.

MG92-602 Mercury Red/ White	MG92-704 Solar Yellow/ Black	MG92-512 Moonstone/ White	MG92-402 Onyx/ White	MG92-204 Northstar/ Black
-----------------------------------	------------------------------------	---------------------------------	----------------------------	---------------------------------

## LaserGlow™

photo-luminescent products

L6302-911 020" 1-Ply Glow with Adhesive	L6322-911 050" Reverse Engravable Glow
--	---

LaserGlow™ Sign Kit Item #9053

\* Br. Gold/Black (LM64-1224) is not recommended for outdoor applications, and is not UV stable.

## ADA Alternative® Substrate & Appliqué

3X1-601 Red	3X1-602 Burgundy	3X1-823 Canyon	3X1-701 Yellow	3X1-901 Bright Green	3X1-902 Pine Green	3X1-903 Black Forest Green	3X1-509 Bahama Blue	3X1-501 Blue	3X1-504 Air Force Blue	3X1-502 Marine Blue	3X1-302 China Blue
3X1-801 Antique Ivory	3X1-808 Sand	3X1-218 Sandwood	3X1-214 Ash	3X1-201 White	3X1-204 Bright White	3X1-305 Light Grey	3X1-306 Pearl Grey	3X1-301 Grey	3X1-307 Charcoal Grey	3X1-502 Taupe	3X1-505 Driftwood
3X1-413 Cinder	3X1-803 Dark Brown	3X1-401 Black	3X1-771 Gold	3X1-304 Silver	3X1-308 Graphite						

\* ADA Alternative® is also offered in a .040" (1mm) thickness.

Also available in gloss finish. Add "G" at the ending, replacing the "M".

## ColorCast Acrylics

CC3X2-600M Red	CC3X2-620M Burgundy	CC3X2-500M Blue	CC3X2-650M Navy Blue	CC3X2-850M Almond	CC3X2-200M White	CC3X2-300M Grey	CC3X2-400M Black	CC3X2-710M Gold	CC3X2-330M Silver	CC3X2-100M Clear
-------------------	------------------------	--------------------	-------------------------	----------------------	---------------------	--------------------	---------------------	--------------------	----------------------	---------------------

Also available in gloss finish. Add "G" at the ending, replacing the "M".

\* Cell Cast Acrylics have thickness variations that may present difficulties in applications where thickness tolerance is important (i.e. fitting into extrusions, thermoforming applications where walls must maintain uniform thickness and consistency of complex structures). Remember to check gauge when non-contact engraving takes place, and to periodically re-check focal lengths when laser engraving. In some cases, thickness variations may require the operator to make multiple passes during laser engraving.

## Textures

822-642A Pimento/ White	822-652 Rustic Red/ White	822-652 Tangerine/ White	822-774 Aid Yellow/ Black	822-774 Aid Yellow/ Dark Brown	822-962 Jungle Green/ White	822-992 Teal/ White	822-592A Royal Blue/ White	822-593 Sapphire/ White	822-259 Bernada Tan/ Dark Brown	822-854 Desert Sand/ Black	822-892 Coffee Bean/ White
822-246 White/ Red	822-205 Winter White/ Blue	822-244A Winter White/ Black	822-302 Ash Grey/ White	822-374 Ash Grey/ Black	822-422A Coal Black/ White						

▲ Available in 1/8"

## GRANITES Deluxe

7X2-514M 7X2-514P Glaizer Blue/ Black	7X2-517M 7X2-517P Glaizer Blue/ White	7X2-512M 7X2-512P Jade/ White	7X2-914M 7X2-914P Jade/ Gold	7X2-917M 7X2-917P Jade/ White	7X2-912M 7X2-912P Sandstone/ Gold	7X2-817M 7X2-817P Sandstone/ Dark Brown	7X2-818M 7X2-818P Sandstone/ White	7X2-812M 7X2-812P Sandstone/ Gold	7X2-317M 7X2-317P Charcoal/ White	7X2-312M 7X2-312P Charcoal/ Clear	7X2-510M 7X2-510P Glaizer Blue
--	--	--	---------------------------------------	--	--	--	---	--	--	--	--------------------------------------

Polished Finish

\* Not recommended for harsh or high humidity indoor or outdoor applications.

## LaserLIGHTS

S61 White/ White	S62 White/ Black	S63 Brushed Silver/ Black	S65 Black/ Gold	S66 Red/ White	S67 White/ White	S68 Yellow/ Black	S69 Br. Bronze/ Black	S73 Smooth Silver/ Black	S75 Black/Silver/ Black	S76 White/Gold
------------------------	------------------------	---------------------------------	-----------------------	----------------------	------------------------	-------------------------	-----------------------------	--------------------------------	-------------------------------	-------------------

Size Codes  
12" x 24" sheets (SX-1224)  
12" x 50" rolls (SX-1205)

Product Codes  
A complete product code includes both the color and size code. (For example, the product code for a Black/White 12" x 24" is S61-1224.)

\* Brushed Brass/Black and Smooth Gold/Black are not recommended for outdoor applications.

# Rotary Engraving Materials

## Ultra-Mattes Front Engravable

3X3-602 Red/ White	3X3-607 Red/ Yellow	3X3-662 Dusty Rose/ White	3X3-632 Ruby/ White	3X3-642 Garnet/ Ash	3X3-862 Canyon/ Ash	3X3-823 Canyon/ Cement	3X3-704 Yellow/ Black	3X3-794 Safety Yellow/ Black	3X3-932 Celadon Green/ White	3X3-972 Hunter Green/ White	3X3-992 Hunter Green/ White
3X3-997 Hunter Green/ Gold	3X3-902 Black Forest Green/White	3X3-312 Sea Grey/ White	3X3-942 Balsam/ Ash	3X3-962 Teal/ White	3X3-592 Ocean Blue/ White	3X3-512 Blue/ White	3X3-517 Blue/ Yellow	3X3-562 Sapphire/ White	3X3-527 Blueberry/ Gold	3X3-542 Blueberry/ White	3X3-382 China Blue/ White
3X3-832 Beige/ White	3X3-838 Beige/ Dark Brown	3X3-802 Taupe/ White	3X3-595 Driftwood/ Alpine	3X3-236 Cement/ Garnet	3X3-238 Cement/ Canyon	3X3-246 Ash/ Garnet	3X3-244 Ash/ Ondr	3X3-218 Sandwood/ Canyon	3X3-219 Sandwood/ Balsam	3X3-414 Parchment/ Black	3X3-228 Ivory/ White

## Mattes

2X2-602 Red/ White	2X2-622 Burgundy/ White	2X2-612 Orange/ White	2X2-744 Yellow/ Black	2X2-932 Bright Green/ White	2X2-972 Celadon Green/ White	2X2-912 Pine Green/ White	2X2-552 Navy Blue/ White	2X2-502 Sapphire/ White	2X2-512 China Blue/ White	2X2-582 Purple/ White
2X2-822 Med. Brown/ White	2X2-842 Dark Brown/ White	2X2-206 White/ Red	2X2-226 White/ Burgundy	2X2-209 White/ Bright Green	2X2-209 White/ Pine Green	2X2-205 White/ Blue	2X2-204 White/ Black	2X2-228 Ivory/ Dark Brown	2X2-854 Almond/ Black	2X2-312 Grey/ White
2X2-325 Light Grey/ Marine Blue	2X2-322 Light Grey/ White	2X2-324 Light Grey/ Black	2X2-402 Black/ White	2X2-412 Black/ Bright White	2X2-172 Walnut/ White	2X2-192 English Walnut/ Br. White	2X2-602 Black Walnut/ White			

\* Only available in 1/16", 2-ply or 1/8", 3-ply.

## Lacquers

4XX-602 Red/ White	4XX-607 Red/ Yellow	4XX-704 Yellow/ Black	4XX-794 Safety Yellow/ Black	4XX-932 Bright Green/ White	4XX-962 Teal/ White	4XX-512 Blue/ White	4XX-517 Blue/ Yellow	4XX-562 Sapphire/ White	4XX-542 Brushed White	4XX-842 Dark Brown/ White	4XX-205 White/ Blue
4XX-206 White/ Red	4XX-204 White/ Black	4XX-174 Vintage Gold/ Black	4XX-914 Parchment/ Black	4XX-228 Ivory/ Dark Brown	4XX-384 Vintage Silver/ Black	4XX-402 Black/ White	4XX-407 Black/ Yellow	4XX-417 Black/ Gold			

## Satins

1XX-602 Red/ White	1XX-604 Red/ Black	1XX-607 Red/ Yellow	1XX-622 Burgundy/ White	1XX-612 Orange/ White	1XX-614 Orange/ Black	1XX-704 Yellow/ Black	1XX-706 Yellow/ Red	1XX-705 Yellow/ Blue	1XX-932 Bright Green/ White	1XX-902 Green/ White	1XX-912 Pine Green/ White
1XX-942 Aqua/ White	1XX-512 Blue/ White	1XX-517 Blue/ Yellow	1XX-533 Blue/ Silver	1XX-532 Air Force Blue/ White	1XX-552 Navy Blue/ White	1XX-542 Metallic Blue/ White	1XX-582 Purple/ White	1XX-838 Beige/ Dark Brown	1XX-832 Beige/ White	1XX-842 Dark Brown/ White	1XX-822 Medium Brown/ White
1XX-234 Polar White/ Black	1XX-208 White/ Dark Brown	1XX-204 White/ Black	1XX-206 White/ Red	1XX-209 White/ Bright Green	1XX-216 White/ Orange	1XX-269 White/ Pine Green	1XX-205 White/ Blue	1XX-854 Almond/ Black	1XX-228 Ivory/ Dark Brown	1XX-312 Metallic Grey/ White	1XX-302 Grey/ White

## Standard Metals/NoMark™

5X2-884 Deep Bronze/ Black	5X2-894 Brushed Copper/Black	5X2-734 Brushed Gold/ Black	5X2-754 European Gold/ Black	5X2-714 Smooth Gold/ Black	5X2-354 Brushed Alum./ Black	5X2-334 Brushed Silver/ Black	5X2-344 Smooth Silver/ Black
----------------------------------	------------------------------------	-----------------------------------	------------------------------------	----------------------------------	------------------------------------	-------------------------------------	------------------------------------

\* NoMark Plus finish is available on all Standard Metals by adding "0+" to the end of the item code.

## Slickers

4X2-600 Metal/ Red	4X2-700 Clear/ Yellow	4X2-510 Clear/ Blue	4X2-560 Clear/ Sapphire	4X2-540 Clear/ Blueberry	4X2-200 Clear/ White	4X2-230 Clear/ Ivory	4X2-400 Clear/ Black	4X2-100 Clear/ Clear
--------------------------	-----------------------------	---------------------------	-------------------------------	--------------------------------	----------------------------	----------------------------	----------------------------	----------------------------

## Ultra-Mattes Reverse Engravable

3X2-601 Metal/ Red	3X2-661 Metal/ Dusty Rose	3X2-631 Metal/ Ruby	3X2-861 Metal/ Canyon	3X2-851 Metal/ Orange	3X2-701 Metal/ Yellow	3X2-911 Metal/ Bright Green	3X2-831 Metal/ Celadon Green	3X2-901 Metal/ Hunter Green	3X2-901 Metal/ Forest Green	3X2-311 Metal/ Sea Grey	3X2-921 Metal/ Teal
3X2-591 Metal/ Ocean Blue	3X2-511 Metal/ Blue	3X2-561 Metal/ Sapphire	3X2-541 Metal/ Blueberry	3X2-381 Metal/ China Blue	3X2-831 Metal/ Beige	3X2-801 Metal/ Taupe	3X2-431 Metal/ Cinder	3X2-501 Metal/ Charcoal Grey	3X2-841 Metal/ Dark Brown	3X2-731 Metal/ Vintage Gold	3X2-371 Metal/ Vintage Silver
3X2-391 Metal/ Graphite	3X2-401 Metal/ Black	3X2-201 Metal/ White	3X2-221 Metal/ Ash	3X2-211 Metal/ Sandwood	3X2-811 Metal/ Parchment	3X2-231 Metal/ Ivory	3X2-241 Metal/ Cement	3X2-581 Metal/ Driftwood	3X2-101 Metal/ Clear		

Looking for the ultimate Rowmark sales tool?  
 Order your full line Rowmark switch binder with actual product sample chips, available from an Authorized Rowmark Distributor or at [www.rowmark.com](http://www.rowmark.com)

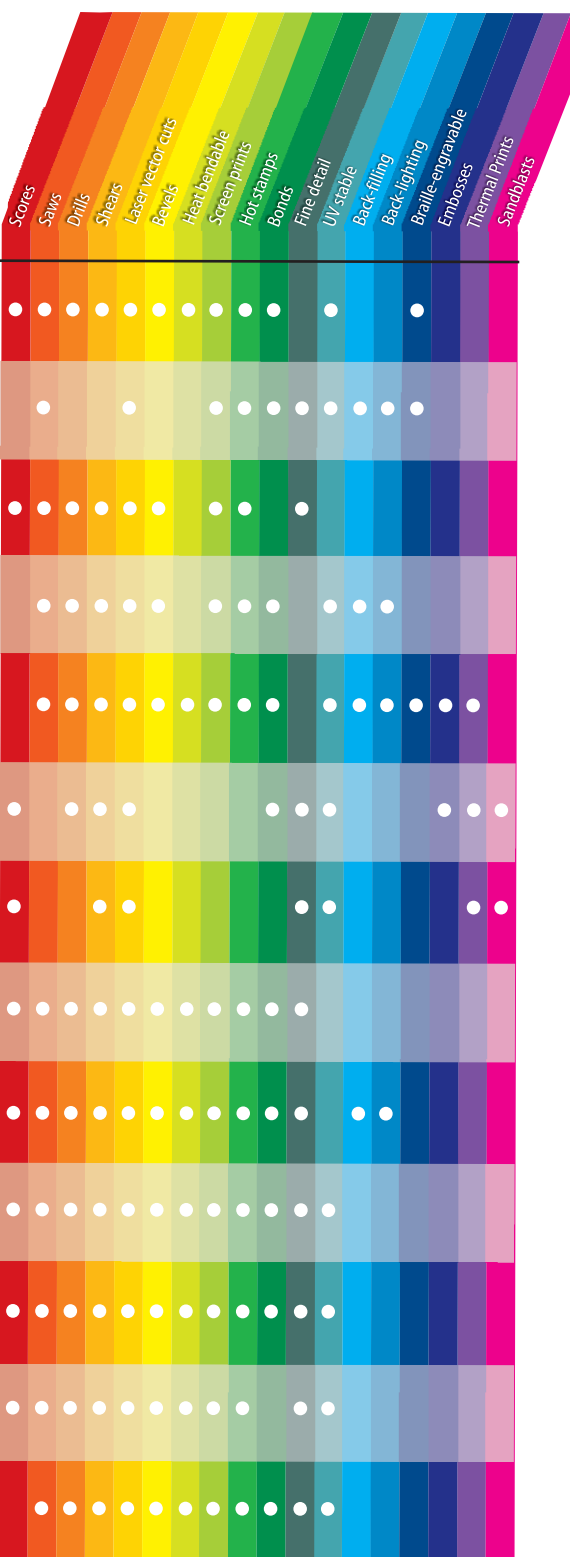
For Rowmark's complete line of products, and for technical help visit [www.rowmark.com](http://www.rowmark.com)

Gauges are approximate for all Rowmark products.



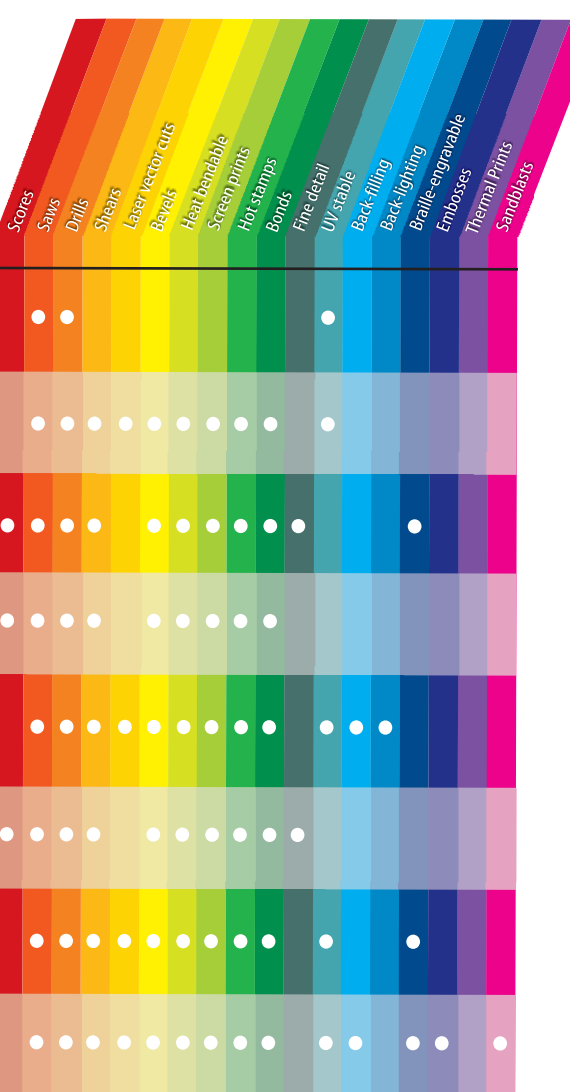
# Laser and Rotary Engraving Materials

Name	Material	Finish	Sheet Size	Thickness	Cutting Depth	Usage
ADA Alternative® Substrate & Applique	Single-ply modified acrylic Available with or without adhesive.	Matte non-glare	24" x 48 3/4" (610 x 1238mm)	1 ply - 1/32" (0.8mm) 1 ply - .040" (1.0mm) 1 ply - 1/16" (1.6mm) 1 ply - 1/8" (3.2mm)	1/4 round .020" tip at 20°-25° angle	Interior & exterior tactile signage, 1/32" gauge may be used for applique
ColorCast Acrylics	Microsurfaced cell cast acrylic for reverse-engraving	Matte non-glare Gloss	24" x 48" (610 x 1219mm) +0, -.125"	2 ply - 1/8" (3.2mm) 2 ply - .236" (6.0mm)	.003" (.08mm)	Exterior signage, ADA compliant (matte only)
FlexiBrass® & FlexiColor®	Microsurfaced high impact acrylic Available with or without adhesive.	Matte non-glare Gloss	24" x 48 3/4" (610 x 1238mm)	2 ply - .020" (0.5mm)	.003" (.08mm)	Interior signage, Trophies, awards & plaques
GRANITES Deluxe®	Laminated impact acrylic for front and reverse-engraving	Matte non-glare Polished	24" x 48 3/4" (610 x 1238mm)	2 ply - 1/16" (1.6mm) 2 ply - 1/8" (3.2mm)	.038" (.97mm)	Exterior signage *High power and low speeds yield optimal results; may require multiple passes. Not for fine detail engraving.
LaserGlow™	Microsurfaced impact acrylic for applique or reverse-engraving	Matte non-glare	24" x 48 3/4" (610 x 1238mm)	1 ply - .020" (0.5mm) 2 ply - .050" (1.27mm)	.022" (0.5588mm)	Interior & exterior safety and egress signage. .020" gauge may be used for applique
LaserLIGHTS	Microsurfaced pre-adhesive plastic	Gloss Brushed metal	10-pack: 12" x 24" sheets Use 1224 as last digit of item code. 12"x50" rolls Use 1205 as last digit of item code.	2 ply - .004" (.10mm) Based with a .001" (.03mm) acrylic pressure sensitive adhesive.	.002" (.05mm) For engraving. .006" (.15mm) For cutting	Personal identification, Industrial, Automotive & Electronic labeling, Recreational applications
LASERmag	Microsurfaced flexible magnetic material	Gloss Brushed metal	10-pack: 12" x 24" sheets	2 ply - .020" (.51mm)		Promotional magnets, Reusable name plates
LASER MARK	Microsurfaced impact acrylic	Matte non-glare Gloss Brushed metal Patterned	24" x 49" (610 x 1245mm)	2 ply - .052" (1.3mm)	.003" (.08mm)	Interior signage, Personal identification
REVERSE LASER MARK	Microsurfaced impact acrylic for reverse-engraving	Matte non-glare Gloss	24" x 48 3/4" (610 x 1238mm)	2 ply - .052" (1.3mm) 2 ply - 1/8" (3.2mm) ▲	.003" (.08mm)	Interior signage, Personal identification
MAX	Microsurfaced impact acrylic	Matte non-glare Gloss Brushed metal Patterned	24" x 49" (610 x 1245mm)	2 ply - 1/32" (0.8mm) 2 ply - 1/16" (1.6mm) 2 ply - 1/8" (3.2mm)	.003" (.08mm)	Exterior signage, Personal identification, Trophies, awards & plaques
metalgraph plus+	Microsurfaced impact acrylic	Brushed metal	24" x 49" (610 x 1245mm)	2 ply - 1/32" (0.8mm) 2 ply - 1/16" (1.6mm) 2 ply - 1/8" (3.2mm)	.003" (.08mm)	Exterior signage, Personal identification, Trophies, awards & plaques
multigraph	Multi-layer high impact acrylic	Matte non-glare Gloss	24" x 49" (610 x 1245mm)	2 ply - 1/32" (0.8mm) 2 ply - 1/16" (1.6mm)	.003" (.08mm)	Exterior signage, Personal identification, Industrial tags
Textures	Co-extruded impact acrylic	Textured	24" x 49" (610 x 1245mm)	2 ply - 1/16" (1.6mm) 2 ply - 1/8" (3.2mm)	.007" (.18mm) Cutting depth on Acid Yellow and Parents is .015" (.38mm).	Exterior signage, Personal identification



# Rotary Engraving Materials

Name	Material	Finish	Sheet Size	Thickness	Cutting Depth	Usage
HEAVY WEIGHTS	High-density polyethylene	Textured	24" x 48" (610 x 1219mm)	3 ply - 1/4" (6.35mm) 3 ply - 1/2" (12.7mm)	1/4" = .030" (.8mm) 1/2" = .060" (1.5mm)	Architectural, outdoor & recreational signage
Lacquers	Laminated impact acrylic	Gloss	24" x 48 3/4" (610 x 1238mm)	2 ply - 1/16" (1.6mm) 2 ply - 1/8" (3.2mm) 3 ply - 1/8" (3.2mm)	.012" (.30mm)	Exterior signage, Personal identification
Mattes	Microsurfaced ABS	Matte non-glare Patterned	24" x 49" (610 x 1245mm)	2 ply - 1/32" (0.8mm) 2 ply - 1/16" (1.6mm) 3 ply - 1/16" (1.6mm) 3 ply - 1/8" (3.2mm)	.003" (.08mm)	Interior signage, Personal identification
Satins	Acrylic cap, ABS core	Brushed	24" x 48 3/4" (610 x 1238mm)	2 ply - 1/32" (0.8mm) 2 ply & 3 ply - 1/16" (1.6mm) 2 ply - 3/32" (2.4mm) 3 ply - 1/8" (3.2mm)	.012" (.30mm)	Interior signage, Personal identification
Slickers	Laminated impact acrylic for reverse-engraving	Gloss	24" x 48 3/4" (610 x 1238mm)	2 ply - 1/32" (0.8mm) 2 ply - 1/16" (1.6mm) Clear/Clear (422-100) gauge is .052" (1.3mm) 2 ply - 1/8" (3.2mm)	.012" (.30mm)	Exterior signage, Personal identification
Standard Metals & NoMark Plus	Microsurfaced ABS	Brushed metal	24" x 49" (610 x 1245mm)	2 ply - 1/32" (0.8mm) (NoMark Plus is not available in 1/32") 2 ply - 1/16" (1.6mm) 2 ply - 1/8" (3.2mm)	.003" (.08mm)	Interior signage, Personal identification
Ultra-Mattes Front Engravable	Laminated impact acrylic	Matte non-glare	24" x 48 3/4" (610 x 1238mm)	2 ply - 1/16" (1.6mm) 2 ply & 3 ply - 1/8" (3.2mm)	.012" (.30mm)	Exterior signage, ADA compliant, Personal identification
Ultra-Mattes Reverse Engravable	Laminated impact acrylic for reverse-engraving	Matte non-glare	24" x 48 3/4" (610 x 1238mm)	2 ply - 1/32" (0.8mm) 2 ply - 1/16" (1.6mm) [Matte/Clear (522-101) gauge is .052" (1.3mm)] 2 ply - 1/8" (3.2mm)	.012" (.30mm)	Exterior signage, ADA compliant, Personal identification



### Key

- Laserable
- UV Stable
- Front-Engravable
- Rotary-Engravable
- Outdoor Weatherable
- Reverse-Engravable
- Indoor Use
- Gloss Finish
- Available in 1/8"
- Not recommended for harsh or high humidity indoor or outdoor applications.
- Gauges are approximate for all Rowmark products.

### Can't find exactly what you're looking for?

We can build different combinations of cap and core in most product lines, as well as develop custom colors. Contact your authorized Rowmark distributor or speak with one of our customer service specialists at 1-800-243-3339 (outside the USA, call 419-425-2407). To request a sample or promotional literature, please call 1-877-ROWMARK or email samples@rowmark.com. For technical assistance, call 1-877-ROWMARK, visit www.rowmark.com or email inquiries@rowmark.com. Outside the USA, call 419-425-8974.

### Terms & Conditions of Sale

Rowmark's warranty is limited to replacement of product only, and such warranty does not extend to the costs of any repeat labor or incidental costs. LIMITED WARRANTY, WARRANTY DISCLAIMERS AND LIMITATIONS OF REMEDIES AND LIABILITIES: Except as set forth above, Seller makes NO OTHER WARRANTIES concerning the products whatsoever. SELLER DISCLAIMS AND EXCLUDES ALL OTHER EXPRESS WARRANTIES AND ALL IMPLIED WARRANTIES, INCLUDING WITHOUT LIMITATION THE IMPLIED WARRANTIES OF MERCHANTABILITY AND FITNESS FOR A PARTICULAR PURPOSE concerning the products. In no event will Seller's liability exceed the paid purchase price of the products. Seller's obligations described in this paragraph shall be Buyer's sole and exclusive remedy against Seller and Seller's Distributors for any liability with respect to the products whether any claim for recovery is based upon or arises out of theories of contract, negligence, tort (including strict liability) or otherwise. Buyer agrees that NO OTHER REMEDY SHALL BE AVAILABLE to Buyer and that IN NO EVENT SHALL SELLER BE LIABLE FOR ANY INCIDENTAL OR CONSEQUENTIAL DAMAGES, including without limitation loss of income, loss of time, loss of sales, cost of replacement items, or claims asserted by Buyer's customers. A suit based on any cause of action must be commenced within one year from the date of delivery of product.

## THE VARSITY COLLECTION

Yes, yes, yes we do!  
We've got colors, how 'bout you?

UV-stable and outdoor weatherable  
Laser and rotary engravable  
44 popular high school and collegiate color combinations  
Perfect for stadium and locker room signage, bag tags, and more!



## Item Code Identification System

Product codes for Rowmark sheet materials follow the general formula outlined below...

<b>1st digit/sequence of digits</b> 1 = Satins 2 = Mattes 3 = Ultra-Mattes (Front & Reverse) 3 = ADA Alternative® 4 = Lacquers 4 = Slickers 5 = Standard Metals 5 = NoMark® Plus Metals 6 = FlexiBrass® & FlexiColor® 7 = Granites Deluxe™ 8 = Textures 9 = LaserMark® & Reverse LaserMark® LM9 = LaserMax® CC3 = ColorCast Acrylics HW9 = Heavy Weights MG9 = Multigraph MP9 = Metalgraph Plus™ LG3 = LaserGlow™	<b>2nd digit indicates product's gauge or overall thickness</b> 0 = .020" (.5mm) 1 = 1/32" (.8mm) 2 = 1/16" (1.6mm) 3 = 3/32" (2.4mm) 4 = 1/8" (3.2mm) 5 = 1/4" (6.4mm) 7 = 1/2" (12.7mm) 9 = 1mm <b>Option for finish:</b> M = Matte (non-glare) P = Polished G = Gloss <b>Option for adding NoMark Plus Hard Coat:</b> 0+ = NoMark® Plus <b>Option for adding adhesive:</b> 8 = Tape	<b>3rd digit indicates product's number of plies</b> 1 = 1 Ply 2 = 2 Ply 3 = 3 Ply <b>Examples:</b> 122-204 = Satins, 1/16", 2 Ply, White/Black LM922-932 = LaserMax, 1/16", 2 Ply, Kelley Green/White 311-7018 = ADA Alternative, 1/32", 1 Ply, Yellow with tape 522-7540+ = NoMark® Plus, 1/16", 2 Ply, European Gold/Black
---	--	---

### Example: LaserMax® White/Black 1/16"

Indicates LaserMax®      Indicates 1/16" Gauge      Indicates 2 ply      Indicates cap/core color (refer to the color chart)

**LM922-204**



www.rowmark.com

24 hours a day, 7 days a week, your best resource for templates and technical help for ColorLine® and MATES sublimatable products.



Rowmark Great people. Great plastic.  
www.rowmark.com | samples@rowmark.com  
For technical assistance call 1.877.ROWMARK or email inquiries@rowmark.com

1/08  
\$90



### Color Chart:

Materials for Engravers & Sign Makers

2040 Industrial Drive | Findlay, OH 45840 USA  
www.rowmark.com | 1.877.ROWMARK | 419.425.8974 | inquiries@rowmark.com  
Custom Orders: 1.800.243.3339 | 419.425.2407 | customerservice@rowmark.com

**Rowmark**  
Great people. Great plastic.