

SPECIAL POINTS OF INTEREST:

- **TRN Resource Library—Try Before you Buy!**
- **Community YouthMapping**
- **TRN Mission Statement**
- **ATECH Workshop A Success**
- **Sub-Groups Tackle Specific Transition Issues**

TRN'S RE-
SOURCES-
FROM
ADAPTIVE SOLUTIONS
EQUIPMENT TO CAREER
ASSESSMENT TOOLS-
ARE FREELY AVAILABLE

Transition Resource Library Offers Variety of Materials

The Transition Resource Network Resource Library is growing. We have adaptive equipment and career assessment materials to lend and we're also compiling transition related websites and publications. This is a work in progress; let's make it useful! Please email or call us to share the resources you use if you do not find them here; we're happy to add them to our resource list. Call Alice Standish at 603-692-4411, ext 51 for more information

Reference Books/Manuals

- *The Dictionary of Occupational Titles*
- *Guide for Occupational Exploration*
- *Transition: Getting From Here to There*-New Hampshire State transition guide compiled by transition organizations and experts statewide
- *Transition: The High School Years*-Local transition guide compiled by Developmental Services of Strafford County. Also available online at: www.bhdssc.org/transition.htm
- *Maneuvering Through the Maze*-Contains listings of state health and human services agencies, private associations and organizations that serve people with physical, developmental, mental health and chronic illnesses and their families-www.nhfv.org
- *Essential Tools*-A handbook for implementing a comprehensive work-based learning program according to the Fair Labor Standards Act.
- *Transition: A Guide for Young People With Disabilities and Their Families*-Compiled by UNH Institute on Disability/UCED

Cont'd on pg 4....

Career Assessment Tools

- WRIOT2-Picture-based career exploration
- Harrington-O'Shea Level 2 (English and Spanish-Career decision-making system)

Career Exploration/Assessment Websites

- Career Exploration CD-compiled by Assessment Consultant, Charles Robinson, Ph.D.—web links to information and resources that include job interview questions, occupations and wages and job shadows.
- NH WORKS web-based tools-www.nhes.state.nh.us; <http://online.onetcenter.org>; www.careerinfonet.org; www.ioscar.org/tx/assessment/samenu.asp

Other Web Resources

- *National Collaborative on Workforce Disability for Youth* www.ncwd-youth.info
- *Office of Disability Employment Policy* www.dol.gov/odep
- *Earnworks-Connects employers with skilled candidates with disabilities* www.earnworks.com
- *Job Accommodation Network-A free service of ODEP to facilitate the employment and retention of workers with disabilities* www.jan.wvu.edu
- *National Alliance for Secondary Education and Transition* www.nasetalliance.org/

Support Groups

Autism Spectrum Disorders: Autism to Aspergers-Education and support for parents and families. Run by parents. For more information call: Betsy Carroll; 749-4015.

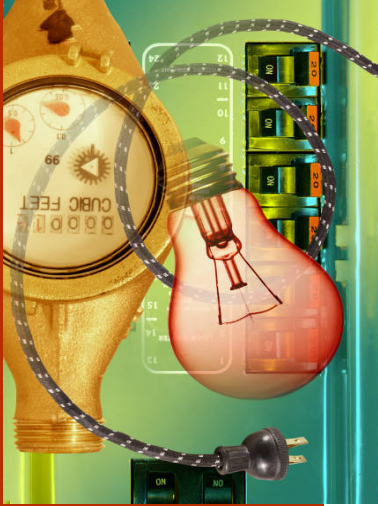
Adaptive Technology

The following is a list of all equipment available to borrow. You can "Google" the name of an item to get a more in-depth explanation of an item.

3-in-1 Headphones and Earphone Combo

Cont'd on pg 2. . .

ATECH Workshop A Success



In September 2005, TRN challenged community members, educators, therapy professionals and employers to “Make a Difference Today” in the lives of persons with disabilities. “Creating Classroom & Worksite Adaptations in Minutes,” is a hands-on adaptive technology workshop geared toward anyone and everyone challenged with limited time and resources to provide immediate adaptations for students and workers with disabilities.

The day-long workshop was provided at no cost to more than 30 participants and was presented by former ATECH Services executive director and adjunct assistant professor at the UNH Occupational Therapy Department, Dr. Therese Willkomm, Ph.D., ATP.

Dr. Willkomm has more than 22 years experience providing and managing assistive technology and is a lively and engaging presenter.

Participants practiced and developed skills in the use of forty-two basic fabrication tools and materials, for adapting class-

room and workplace environments, equipment, work tasks and activities—in five minutes or less.

“There were great visuals and lots of things to tinker with,” said speech and language specialist Melissa George.

Additionally, participants made and took home ten assistive technology solutions that can be used in the classroom or the workplace as well as a “take and make kit” containing fabrication tools and materials, an instructional video and a copy of Dr. Willkomm’s book: “A.T. Solutions in Minutes.”

“The toolbox is wonderful,” said physical therapist Caroline King. “I can now take a sample of the material I need to the store and ask for it!”

Solutions demonstrated at the workshop included quick desk, table, and workstation modifications; foot rests in 30 seconds; innovative solutions for reading; tips and tricks for

Cont'd on pg 5 . . .

Adaptive Technology cont. . . .

Amplified Stereo Listener
 Auto Tape
 Back Relax
 Calbe Clamp
 Child Size Keyboard
 Cold Heat
 Colored Electrical Tape
 Dana by Alphasmart
 Deskalator
 Enercell Plus
 Flasher Ringer by RadioShack
 Get-A-Grip Ultra
 Gloves in a Bottle
 Grip Master Pliers
 Hi-Mark Pen
 Inova 5x LED Flashlight
 Irwin Quick-Grip
 Kind Remind
 Mini Task Light by RadioShack
 Multi-Alarm Pocket

Offset Door Hinge
 Orthex Grip Kit
 Pocketalker Pro
 Port-A-Bar by Grabit
 Portable Phone Amplifier
 Radium by Phonic Ear
 Ratchet Clamp by Craftsman
 Ratchet Pruners RP 3230
 Reading Pen
 Rim-Free Lighted Magnifier
 Rocket Mouse
 Roll Arounds
 Snowflake Voice Recorder
 Suction Brush
 Table Mover
 Talking Alarm Watch by RadioShack
 Vibrating Alarm Watch
 Videolupe
 Yak Trax Pro

We're on the Web!
www.straffordlearningcenter.org

Youth Discover County Resources

TRN piloted Community YouthMapping in Strafford County this past July.

In partnership with the UNH Cooperative Extension, TRN was one of two programs state-wide that introduced this youth-led method of asset mapping.

YouthMapping involves young people canvassing neighborhoods block by block, in search of traditional and non-traditional programs, services, opportunities and caring adults available to them, their peers and their families.

Youth from Dover and Rochester, participated in an intense two-day training where they practiced important work readiness skills like public interaction and teamwork.

“YouthMapping is not only a tremendous resource to the community, it also provides young people with viable employment skills as well as the opportunity to feel connected to the community through genuine interactions and service,” said TRN’s director Heidi Wyman.

At a community forum in January we presented the initial results of the July mapping to more than 25 community members representing a cross-section of youth service providers, educators and community organizations. Greg MacIntosh and Kim Seale from Project PRIDE in Rochester, two members of the Youth Mapping team, shared their mapping experiences and spoke about what they learned from the project.

Both Kim and Greg said the experience bolstered their confidence levels and provided an opportunity to present young people to the community in a positive way.

“In high school I was very shy and kept pretty much to myself.” Greg said. “I’d never talk in front of a group of people. The training helped, doing this helped; now here I am talking to all of you.”

The information collected by the “Mappers” includes types of services and opportunities, ages served, eligibility criteria, languages spoken, accessibility of facilities, transportation and more. [Cont’d on pg 5](#)



Youth Mapping training provided important work readiness skills like public interaction and teamwork

Sub-Group Updates

When TRN was formed in October 2004 an Advisory Council was formed to oversee the activities of the grant.

The Advisory Council anticipated that smaller working groups would be formed

to look at specific areas of transition.

In October of this year great progress was made in

forming these groups.

The following is a list of Advisory Council Sub-groups; please contact Alice

Standish (692-4411 X 51) for more information or if you are interested in participating in these groups.

Employer Relations

This group focuses on helping TRN reach out to the business community in a effective way.

Career Assessment Practices

This group participated in the Charlie Robinson “Person/Environment Match training and continues to meet to share practices and discuss career assessment methods in their schools.

Resource/Information Management

This group was formed following a Youth Vision Forum that included representatives from the Federal Department

of Labor, Education and Justice. Held in October 2005, the forum provided an opportunity for local branches of these departments to advance a collaborative approach to help our neediest youth succeed in today’s global, demand-driven economy.

The forum brought several new local partners to TRN (see list on pg 5) and provided the stimulus to develop a sub-group to consider the information gap many youth, families and service providers note: that it is very hard to get a handle on what is out there.

The group is considering a call center model similar to “Service Link.”

Stay tuned for more!



A History of TRN



The Transition Resource Network was established through a grant from the NH Developmental Disability Council and Workforce Opportunity Council through a State-wide Youth Transition Alignment Grant from the Department of Labor Office of Disability Employment Policy (ODEP).

The underlying premise of TRN is that there are many supports and services, both school and community-based, to assist youth ages 14-24 with the transition to adulthood. These programs and services span the areas youth need to succeed: school-based preparatory experiences, work-based learning, youth leadership and development, family supports, and connecting activities.

However, research indicates these supports often are not coordinated within a community, frequently contain intra-program barriers to participation, and present a confusing array of options to youth and families.

In addition, these programs and services reach out to employers for work-based learning and employment opportunities, but often do not take into account the needs of employers in that outreach.

Since its inception, TRN has worked under the principle that all entities that have a stake in helping youth successfully transition to adulthood should be connected to, or at least aware of, the project. With this in mind TRN's program director, Heidi Wyman, met individually with transition-related service providers and school districts in the region to assess what is there and what is needed.

Federal funding, anticipated through 2008, has been eliminated effective October 1, 2006.

During the coming months TRN will actively pursue ways to continue this important work.

TRN Resources cont . . .

- *The 411 On Disability Disclosure*-A workbook compiled by the National Collaborative on Workforce and Disability that helps youth make informed decisions about disclosing disabilities.
- *Full Life Ahead: A Workbook and Guide to Adult Life for Students and Families of Students with Disabilities*-Developed and written by parents for parents and students.
- *Connected by 25: Improving the Life Chances of the Country's Most Vulnerable 14-24 year-olds*-Compiled by Michael Wald and Tia Martinez for the Hewlett Foundation.



We're on the Web!
www.straffordlearningcenter.org

TRN Partners

TRN Advisory Council:

Bill Ingram-NH Dept. of Vocational Rehabilitation
Bob Marquis-Director of Special Education SAU 56
Carmen Young-Director of Special Education Oyster River School District
Gina Duchesne-NH Dept. Of Vocational Rehabilitation
Hugh Philbrick-Community Partners
Jaclyn Adams-Director of Special Education and Project ASPIRE, Dover School District
Janet Salisbury-Community Partners, Director of Youth & Family Services
Kathy Condon-Project PRIDE, Executive Director
Kevin Murphy-Strafford Learning Center, Executive Director
Marianne Rechy-NH Employment Security, Office Manager
Michelle Hart-NH Works, Workforce Development Coordinator
Paula Wensley-Special Education Director SAU 64
Sharon Dutkowski-Community Partners
Sharon Pray-Director of Pupil Services Rochester School Department
Sue Pleau-Special Education Director SAU 61
Traci Cameron-Special Education SAU 61

Partners include:

Dover High School, Farmington High School, Somersworth High School, Project ASPIRE, Project PRIDE, Oyster River High School, Nute High School, Spaulding High School, The Parent Information Center, Vocational Rehabilitation, NH Works and Community Partners of Strafford County.

Career Assessment Sub-Group:

April O'Keefe-Vocational Assessor, Dover HS
Christine Cullimore-Special Education Nute HS
Eileen Connolly-Special Education ORSD
Jeff Turgeon-Job Coordinator Spaulding HS
Jen McGuinness-Special Education ORSD
Mary Nazzaro-Special Education Farmington HS
Michelle Shaheen-Student Services Somersworth HS
Minnett Induisi-Student Service Coordinator Somersworth HS

Employer Sub-Group:

Marianne Rechy, NH Employment Security, Office Manager
Michelle Hart, Workforce Development Coordinator, NH Works;
Gina Duchesne, Vocational Counselor, NH Department of Vocational Rehabilitation;
Courtney Ritchings, Work Based Learning Coordinator, RW Createau Technology Center, Spaulding High School

Resource/Information Management Sub-group:

Betty Keegan, NH Dept. of Health and Human Services
Cheri Trombley, Workforce Development, NH Employment Security
Darla Jarvis, Dept. of Health and Human Services
Diane Carpenter, Project PRIDE
Francine Carter, Dept of Health and Human Services
Justin Carloni, ASPIRE Coordinator, Dover HS
Kathy Condon, Director, Project PRIDE
Marianne Rechy, NH Employment Security, Office Manager
Scott Vincent, Dept. of Health and Human Services.

Community Youth Mapping Cont . . .

Several young people are now entering the information collected during the first phase of the mapping into a national database that will provide a rich new source of information about local resources for youth which can be accessed by youth and families. Any business, regardless of the nature of their work, is included in the database which "plots" businesses based on their street location using

GIS technology.

This information also will prove useful in electronic data bases, reports to policy makers, discussions about youth-related programs, and as background material for the media.

TRN will be facilitating Community Youth mapping again in the summer of 2006. Anyone interested in participating (youth, volunteers, sponsors) should contact Heidi Wyman at 603-692-4411, ext. 50.

Atech Workshop Cont . . .

adapting writing instruments, hand tools, eating utensils and lab equipment; switch making, modifying, and mounting; creating a hearing friendly classroom; rapid arm supports to increase function; computer keyboard and mice modifications and quick communication devices.

"This workshop was very helpful," said King. ". . . practical information on available products on the market; how to adapt

what is easily available, and also a quick review of thought process—from changing environment up to more specialized adaptations."

Participants polled after the workshop were eager for more.

"I think more of the same would be great," said George. "I'm specifically interested in the communication piece of assistive technology."

TRN Mission Statement . . .

The Strafford County Transition Resource Network creates opportunities for young adults who are transitioning from high school to develop skills in youth leadership, self-advocacy, and workforce preparedness, for their futures in post secondary education and employment, through a collaborative effort with community agencies, schools and employers.

Transition Resource Network

At
Strafford Learning Center
317 Main Street
Somersworth, NH 03878
Phone: 603-692-4411
Fax: 603-692-6717
E-mail: hwyman@slc.k12.nh.us

Helping youth make the connections they need to succeed!

To: